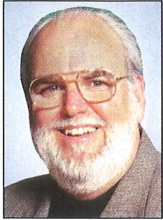


Tradition, New Ideas Find a Perfect Match



Donald F. Evans is the founder of The Evans Group, award-winning architects and planners headquartered in Orlando.

By Donald F. Evans, AIA

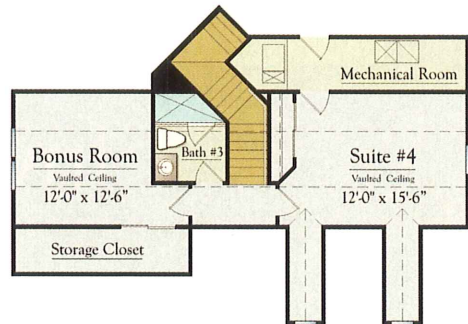
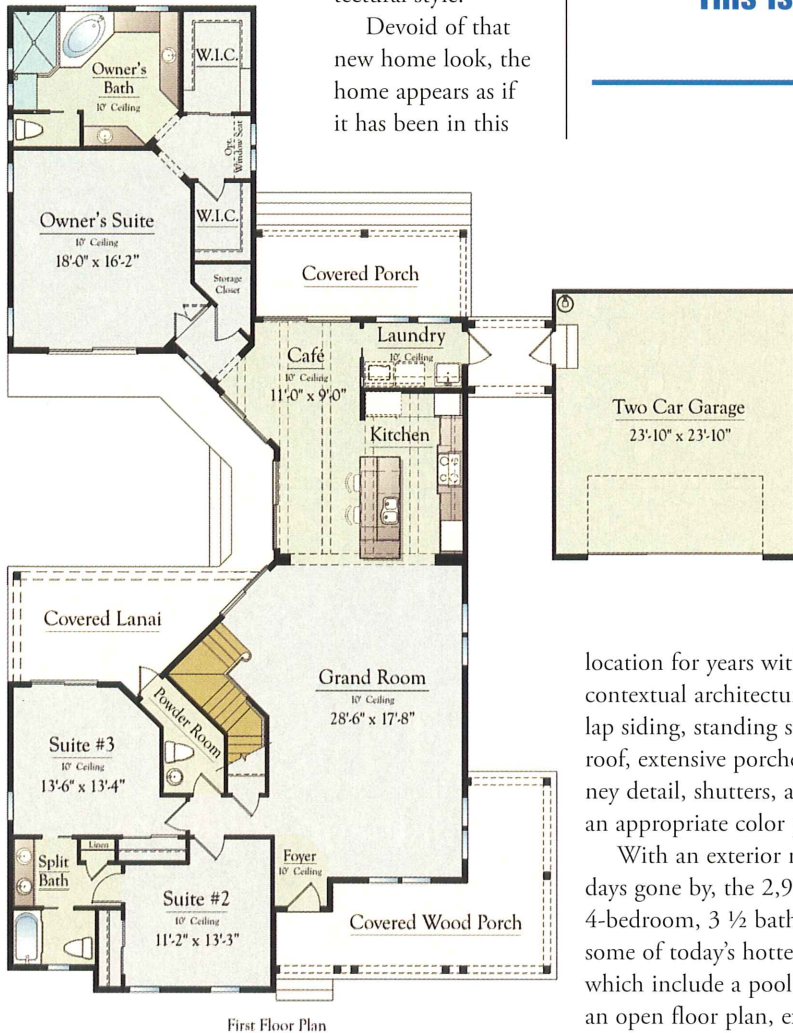
This issue's featured home is not your typical model with the requisite one tree, two bushes, and a Bahia. The streetscape speaks not only to the region in which it is built but also to its unique natural surroundings.

Nestled amongst the indigenous vegetation of North Florida, this Aurora Award-winning model home was designed to preserve the beauty of natural Old Florida with the charm of the Florida Coastal architectural style.

Devoid of that new home look, the home appears as if it has been in this



"This is a truly a home with a beautiful blend of old and new."



Second Floor Plan

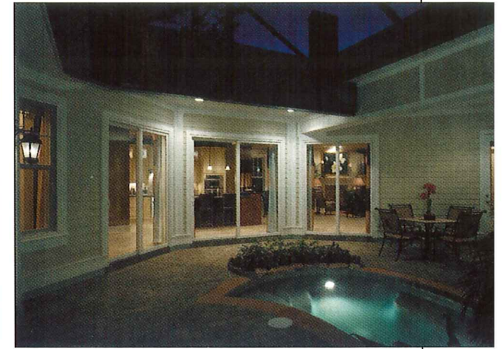
location for years with regional and contextual architecture that features lap siding, standing seam metal roof, extensive porches, brick chimney detail, shutters, all designed in an appropriate color palette.

With an exterior reminiscent of days gone by, the 2,980-square-foot, 4-bedroom, 3 1/2 bath home features some of today's hottest features, which include a pool courtyard, an open floor plan, extensive cov-

ered outdoor areas, a second floor bonus room, and a detached two-car garage.

With a simple regional exterior and a contemporary interior layout, the home was designed to appeal to the many different market segments in the area. The true split plan features a private Owner's Wing complete with dual walk-in closets and a luxurious bath all overlooking the spectacular outdoor environment afforded by the courtyard configuration.

The secondary bedrooms are located at the front of the home,



while the Guest Suite is located upstairs, affording privacy for everyone. The Grand Room, Kitchen, and Café provide an open entertainment space extending from the front porch out to the screened pool environment and back to the covered porch

overlooking the lush rear yard. The extension of the space beyond the four walls into the outdoor environments and the influx of natural light into the interior of the home creates the illusion of a much larger home.

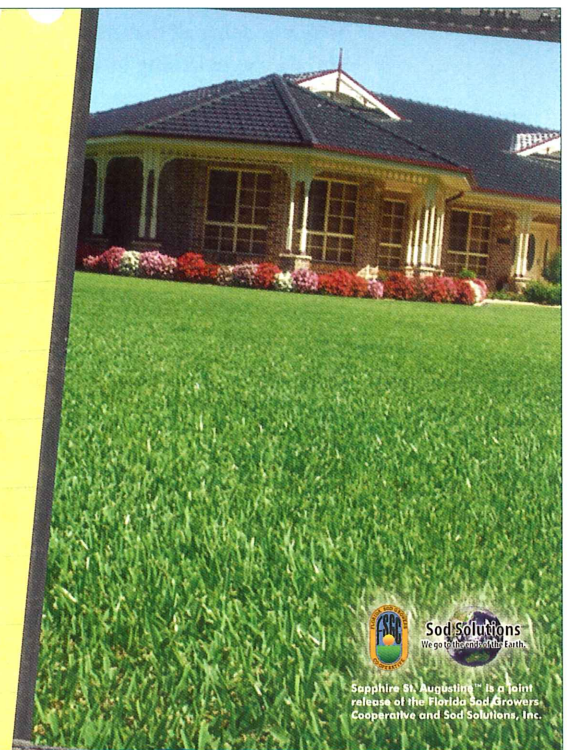
The coveted second floor Bonus Room would be the perfect spot for a Teenager's Escape, Home Office, Family Play Room, Home Theater, or anything that the buyer desires. Truly... a home with a beautiful blend of old and new.



Home Spec Sheet

- Granite Counter Tops
- In-Home Theater
- Custom Cabinets
- Sapphire St. Augustine

Building a dream house is easy. Creating a "home" requires more thought. Sapphire is *the* premier St. Augustine lawn, providing a positive first impression. Sapphire has lower maintenance needs and is soft to the touch, which adds to its appeal. Sapphire creates a *lawn to live on* for a house built to be called "home."



Sapphire St. Augustine™ is a joint release of the Florida Sod Growers Cooperative and Sod Solutions, Inc.

Sapphire
ST. AUGUSTINE™

For more information, including where to buy, visit us at
www.LawnToLiveOn.com

PROMO CODE: Homebuilder